

Alex Dukal's **THE CARTOONIST BRUSHES** for Photoshop



More than 200 brushes & tools for graphic artists, animators, cartoonists, and everyone that loves to draw with black inks, water and experimental materials.

'The cartoonist brushes' includes from classic clear lines to the emulation of vintage line styles (Searle, Provinsen, Pratt, DePatie, Breccia, etc.), from the dirtiness of the Dry point technique to the **AMAZING** and never more realistic "ink washing" effect! and more... crosshatching, Sumi-e, fountain pens, splatters, texturing, etc. you'll find yourself enjoying and making your job more effective with these proven tools.

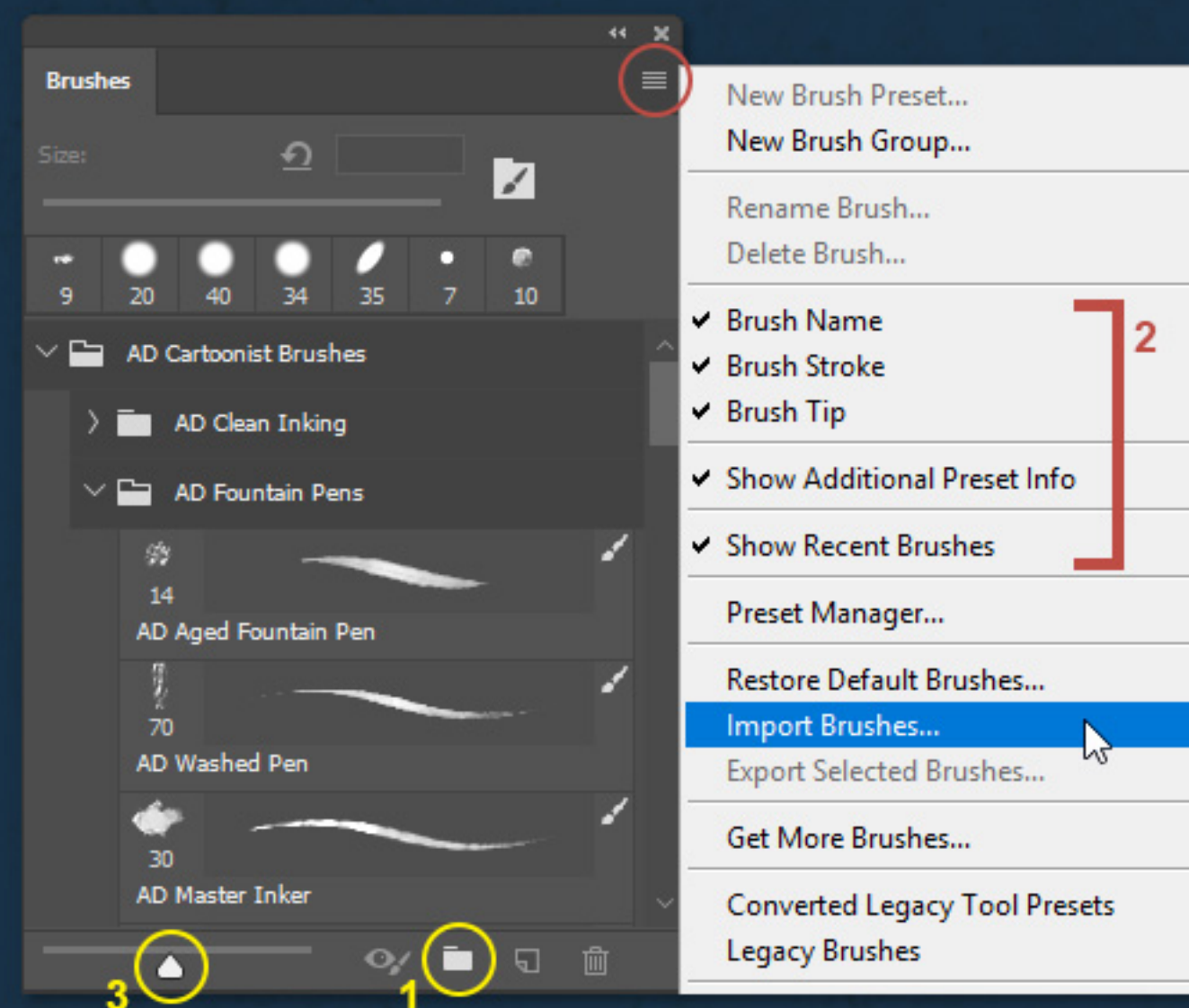
www.alexdukak.com

PS CC2018 ABR Brushes Help

Photoshop CC2018 (version 19.0) introduced an easier brush management and enhanced brush options so...

it's time to provide my tools also as ABR files!

Before loading the AD brush sets I recommend to create a folder inside the Brushes Window (Photoshop > Window > Brushes) and place all my sets as sub-folders inside that 'main' folder, like the example below:



1. Use the folder icon at the bottom of the Brushes Window to create a New folder. Then you can 'import' brush sets and drag & drop brushes and folders.

2. Click the icon at the top right corner to open the options menu and from there choose how to preview the brushes (Name, Stroke, Brush tip and additional info).

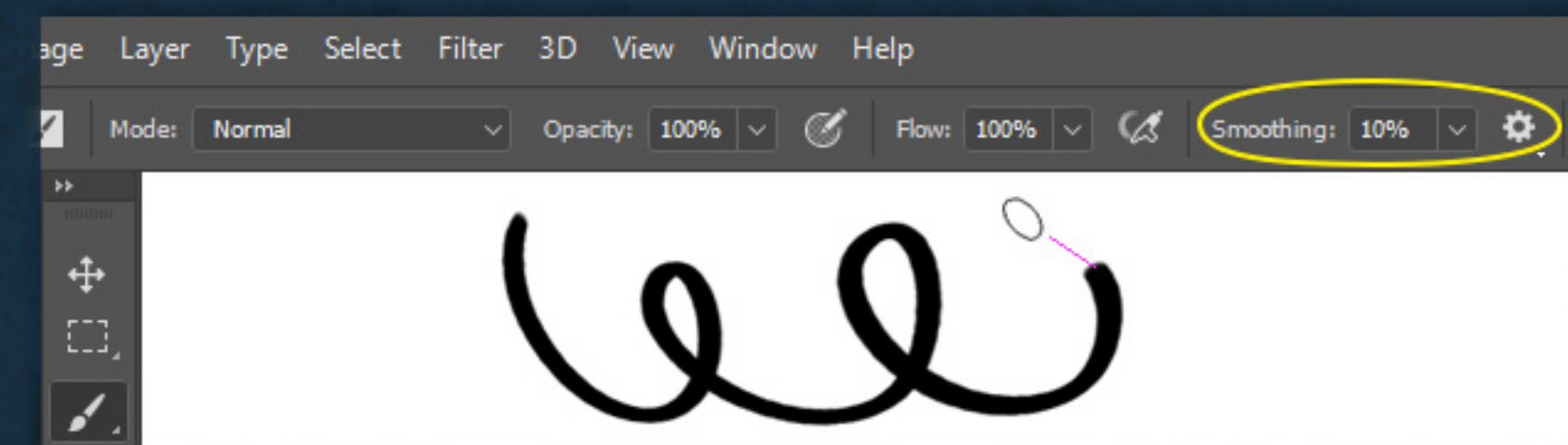
3. Use the slider to resize the brushes preview.

4. Can we use the new ABR brushes in earlier versions of Photoshop? Yes, at least in CS6, but remember that in those versions there are settings that are not saved with the brushes (Flow, Opacity, Color, etc.) so it's still recommended to use my Tool Presets instead.

Brush Stroke Smoothing

There's a new feature in Photoshop CC2018 that enables Smoothing (or Line stabilization) for the brush strokes and it's enabled by default with a 10%, for my brush tools I mostly prefer a 0% by default or in some cases I decided to turn it off completely.

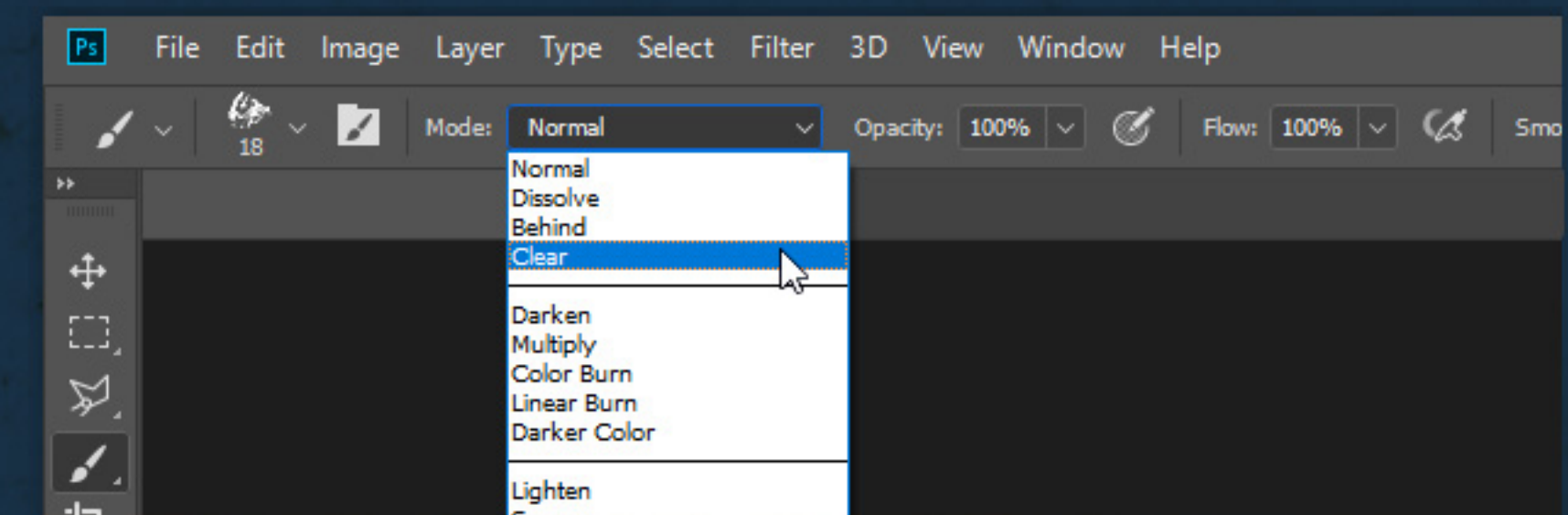
You could change that Smoothing percentage easily using the new Photoshop keyboard shortcut: ALT + Numeric Keys (Eg.: ALT + 1 = 10%, ALT + 6 = 60%)



You can also turn off the magenta line that guides the stroke. Go to PS > Edit > Preferences > Cursors and uncheck 'Show Brush Leash While Smoothing'

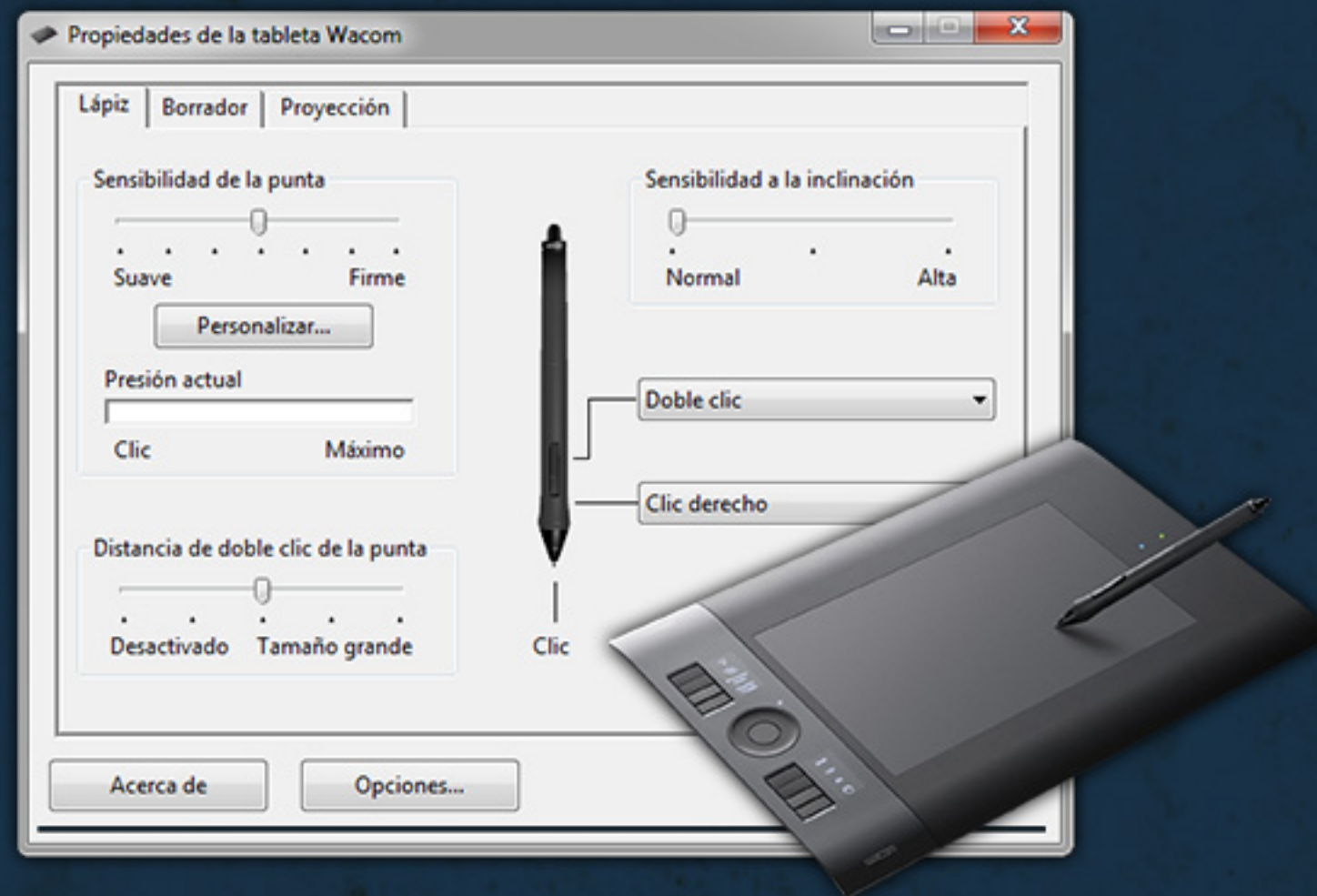
How to use any brush as an eraser

When using the brush tool change it's mode to 'Clear' and it will respond as an eraser. If the 'Clear' mode isn't enabled you'll need to unlock the active layer. The Keyboard Shortcut is: SHIFT + ALT + R = Mode Clear and SHIFT + ALT + N = Mode Normal



AD Tool Presets Instructive

Until PS CC2018 the 90% of my brushes were provided as 'Tool Presets', basically because this file allows to include more options and tools to improve the quality and workflow. As you probably already know Photoshop Tool Presets are .TPL files and are accessed through the Tool Preset panel.



This set of tools were made and tested with Photoshop CS6 & Creative Cloud using a Wacom Intuos 4 tablet with the default configuration. Using another combination, or if you change those settings, the brushes probably will respond a little bit different, so take care of that.

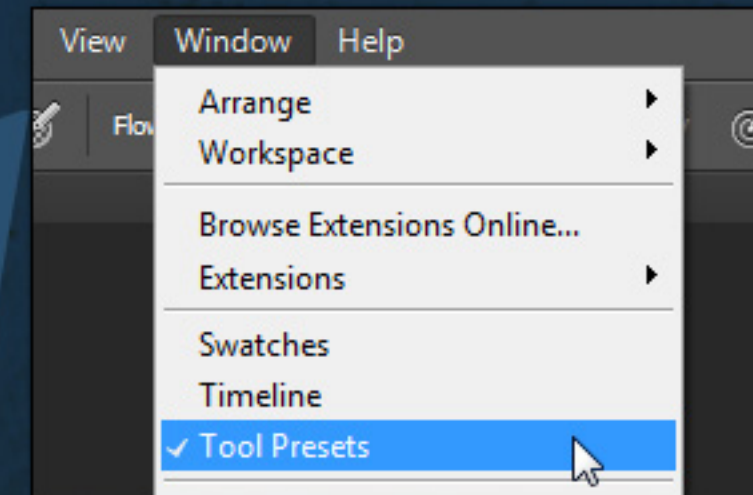
TIP

Opacity: 100%

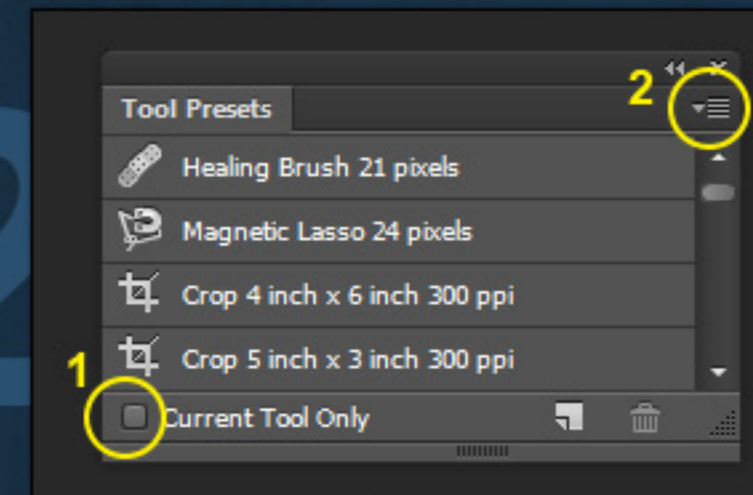
Flow: 62%

If you found that a tool is too soft (that use to happen using a Wacom Bamboo or Graphire with less pressure levels than a Intuos) try to adjust the Flow, in some presets I use a low number to obtain a desired effect.

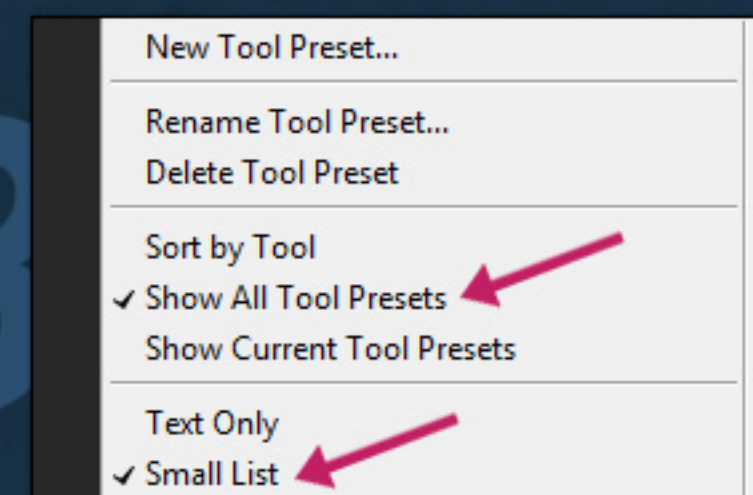
Setting up and loading the Tool Presets



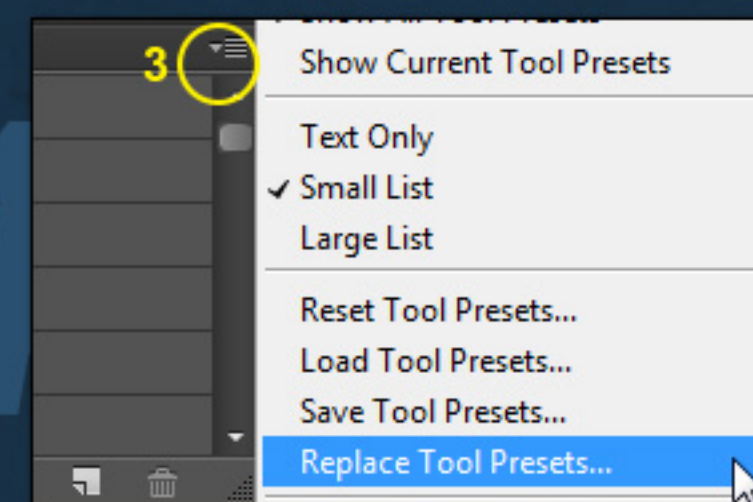
Start by opening the Photoshop 'Tool Presets' Window from PS > Window > Tool Presets



1. Uncheck 'Current Tool Only' option.



2. These are the options to view the AD tools in the right order. If you let the 'Sort by Tool' option checked, the right order will be broken. Reload the Tools if you modify this.



3. Finally, load the Tools by choosing the 'Replace Tool Presets' option (or choose 'Load' if you want to Add it). Take care and always save your existing presets before make any thing!

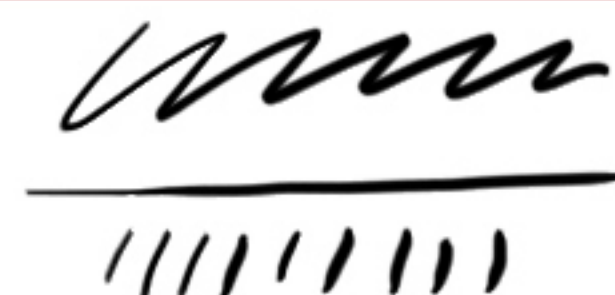
Alex Dukal's
THE CARTOONIST BRUSHES
 for Photoshop

CLEAN INKING

01. BALLPOINTY



02. TECH PEN



03. CLEAN ROUND



04. CLEAN IMPERFECTION



05. CLEAN BOLD



RETRO CARTOONIST

01. RONALD THIN



02. RONALD BOLD



03. RONALD CAFFEINE



04. PROVENSEN THIN



05. PROVENSEN BOLD



06. GILLETTE



07. FANZINE INKER



08. BAD STUDENT



09. OLD WORN BRUSH



10. UPA!



11. UPA! WET



12. BROKEN PEN



13. RALPH FINE



14. RALPH MED



15. PHOTOCOPY LINE



16. VIUTI



17. BROKEN BLOTCH



18. PANTERS STICK



19. SHAUN #1



20. SHAUN #2



21. SHAUN #3



22. SHAUN #4



23. SHAUN #5



24. KIMBALL



25. DRUNKEN MONKEY



26. CAVEMAN INKER



27. RAZOR #1



28. LIQUID SMOKE



COMICS

01. PEN NIB



02. MINI FLAT



03. INKER LAST DAYS



04. TARDI THIN



05. TARDI REGULAR



06. TARDI THICK



07. BLOCH



08. RUSSIAN NIB



09. FRANQUIN BOLD



10. KUBERT



11. JAPANESE



12. WOLVERTON



13. PRATT SHADOWS #1

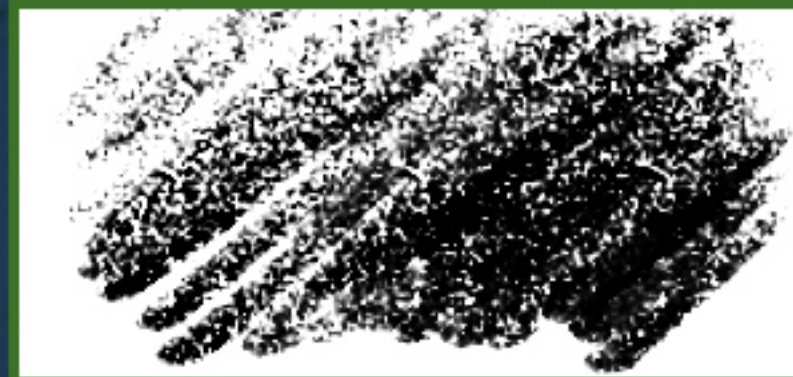


14. PRATT SHADOWS #2



TEXTURING

01. DRY GRITTY



02. TRIPERO #1



03. TRIPERO #2



04. STONE XEROX



05. MONOCOPY A



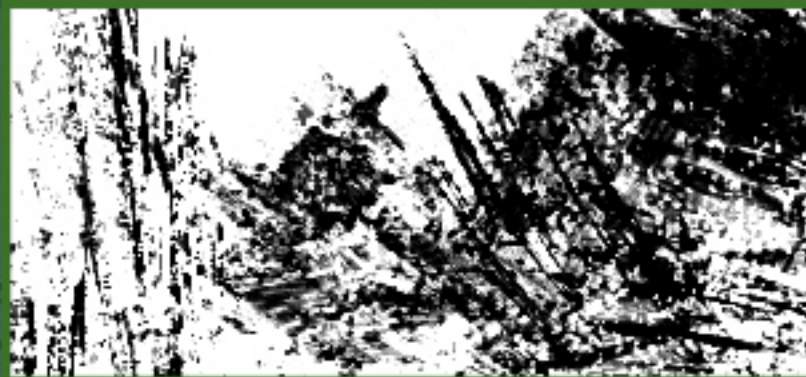
06. MONOCOPY B



07. THE COAST



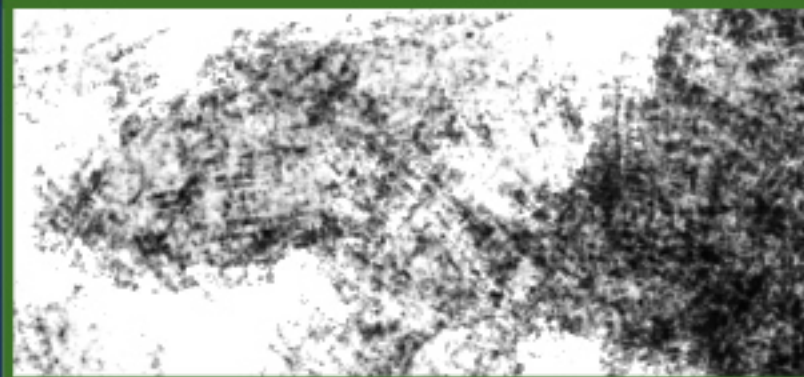
08. BRAINSTORMING TRASH



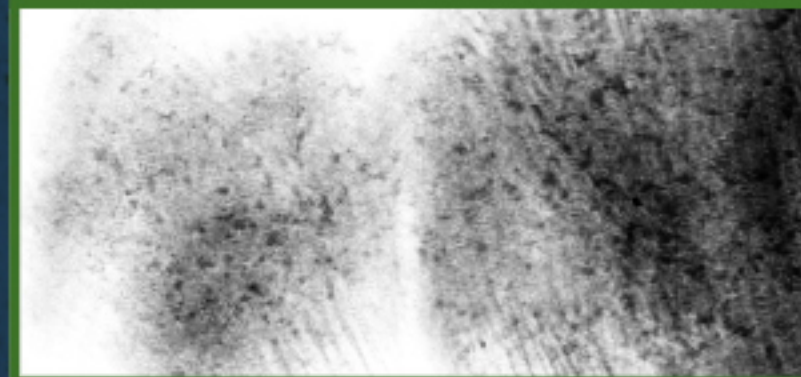
09. STATE OF TEXTURE



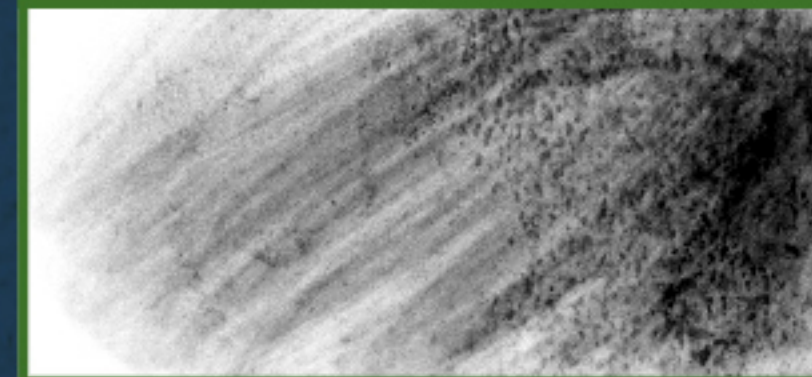
10. CTHULHU



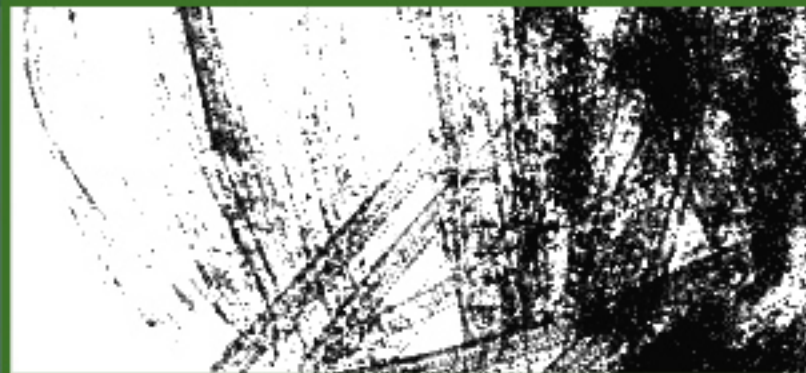
11. ZOMBIE SKIN



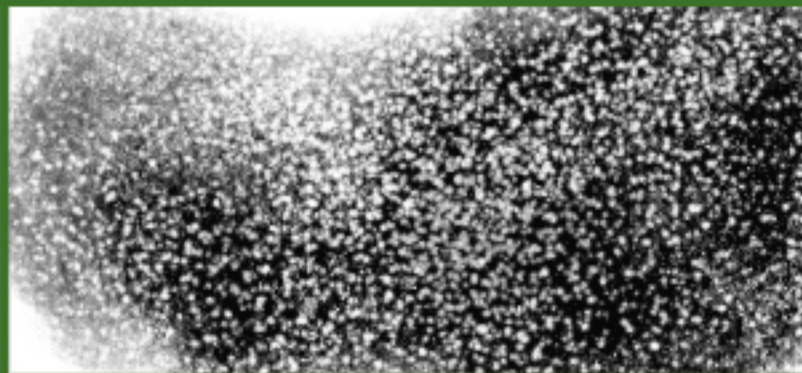
12. SOFT DIRTY



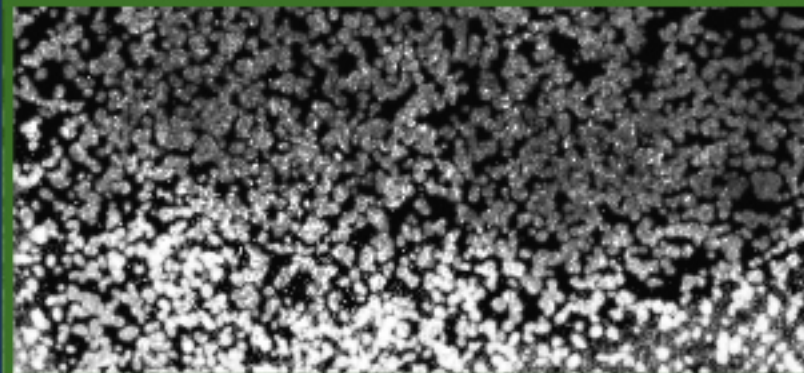
13. SCRAPED



14. REACTIVE ACID FINE



15. REACTIVE ACID



INK WASH



02. NINETIZE WASH



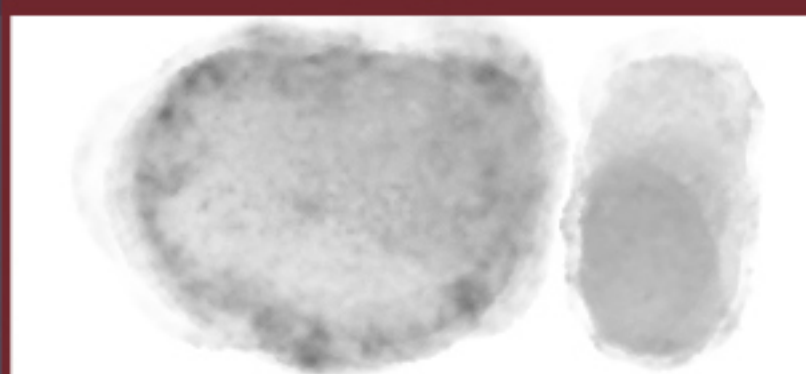
03. WASH ARTISAN



04. WASHED INK



05. STAIN



06. GIGANTIC #1



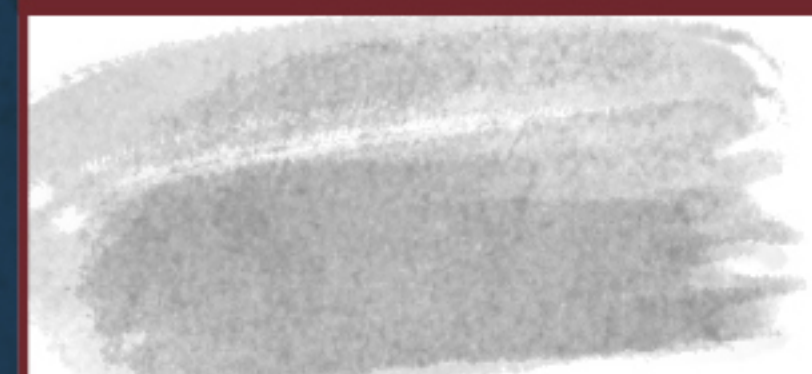
07. GIGANTIC #2



08. CANSON WASH



09. FILBERT SOFT WASH



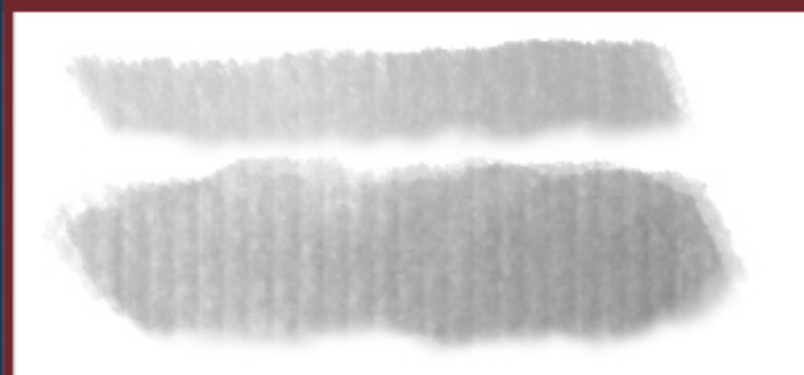
10. CANSON MINI



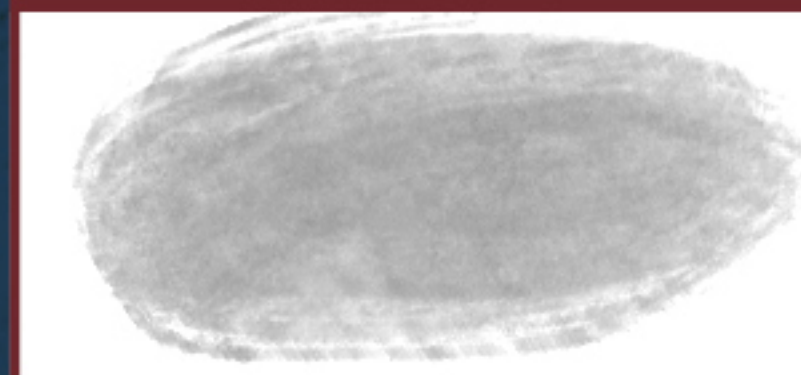
11. LIGHT WET CARDBOARD



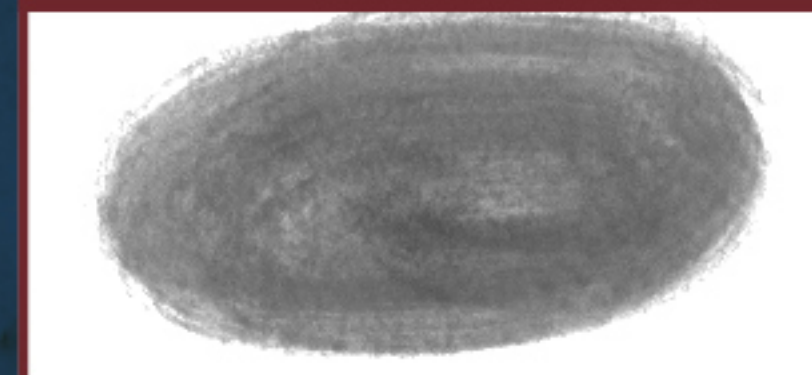
12. WET CARDBOARD #2



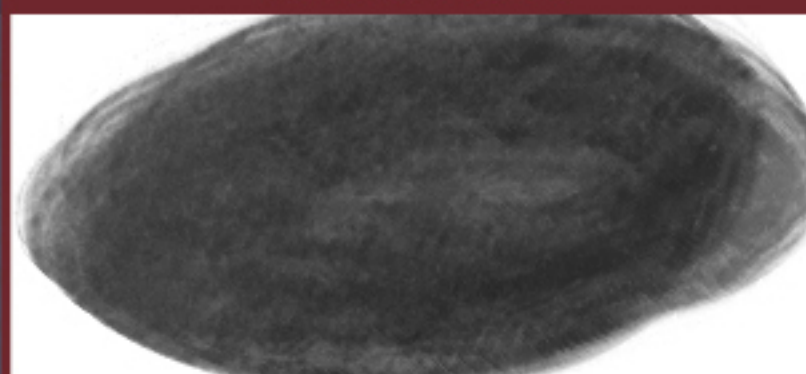
13. GREY 20%



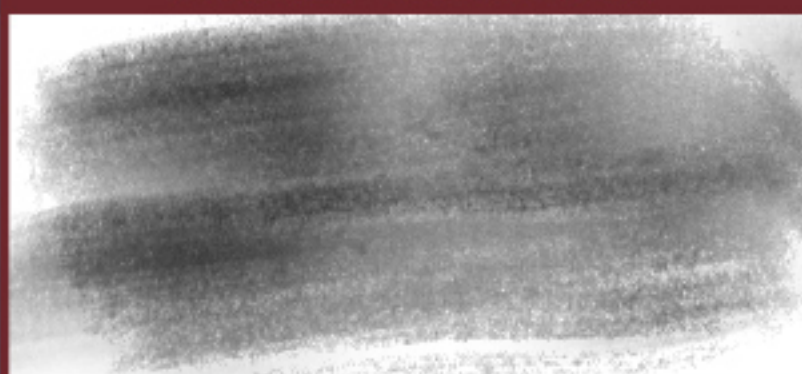
14. GREY 50%



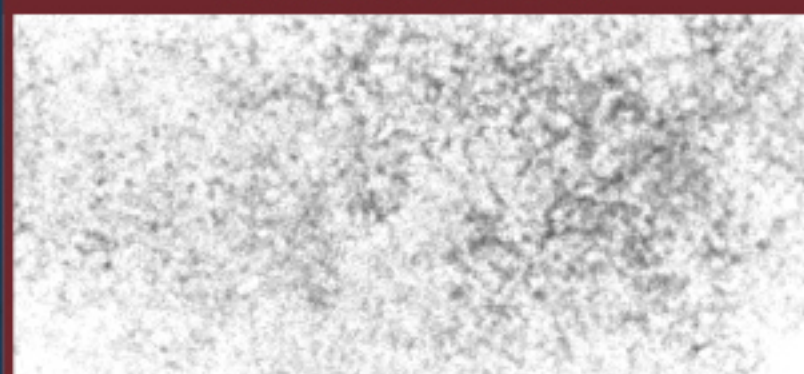
15. GREY 80%



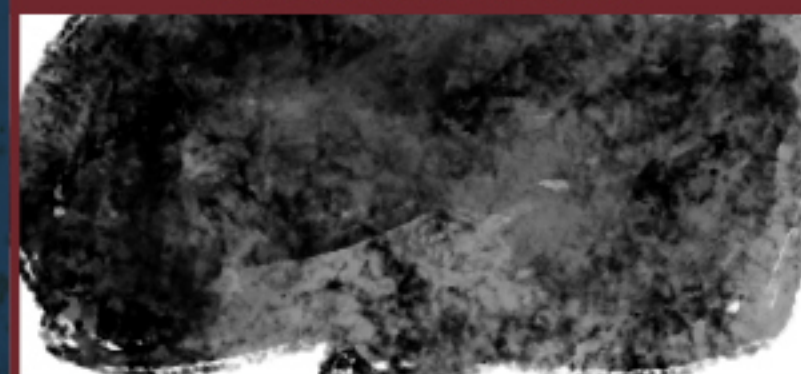
16. GREY HAIR BRUSH



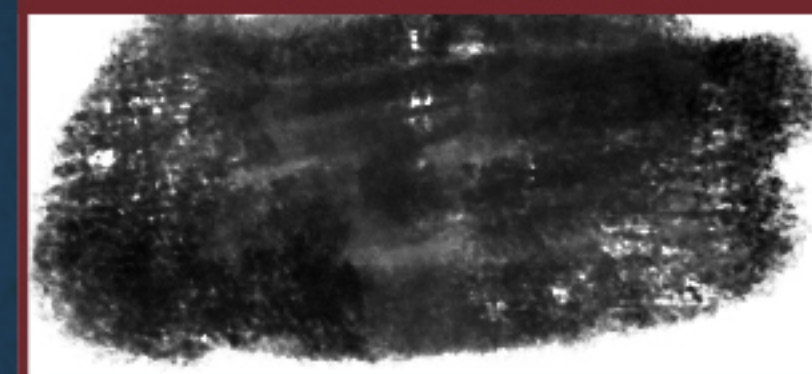
17. ADD TEXTURE



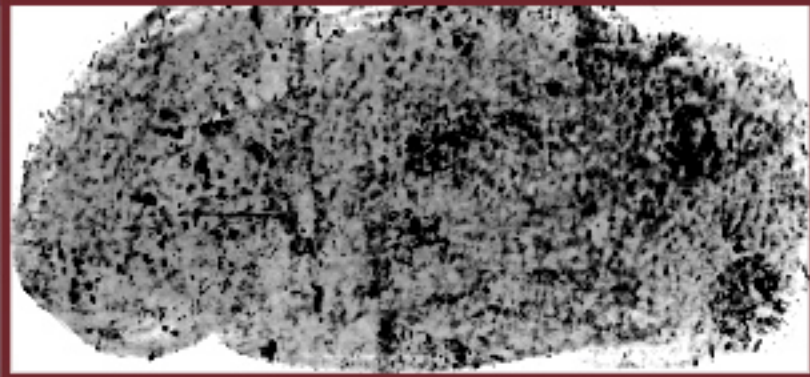
18. GRUNGY FILLER



19. DARK GRUNGY WASH



20. DIRTY WASH



21. ADD WATER



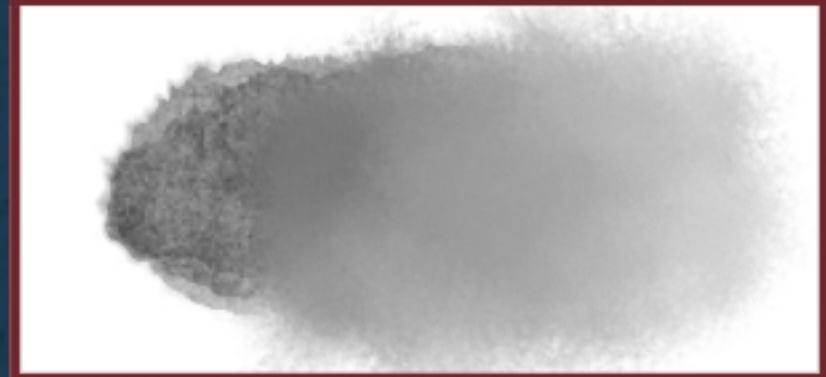
22. BORDER DIFFUSER



23. BLEACH



24. WET COTTON



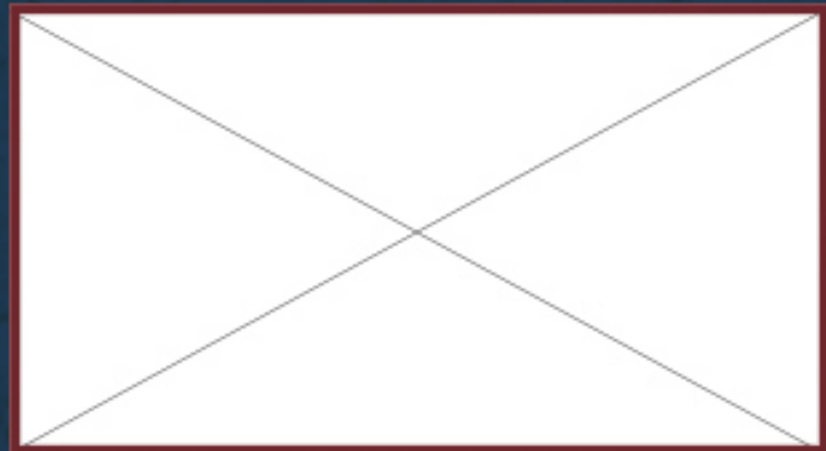
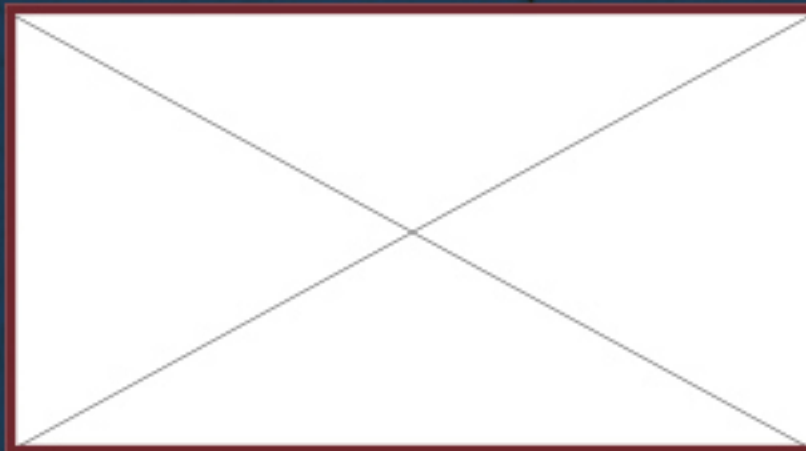
25. WASH THAT LINE



26. WASH BURN



27. WASH DODGE



SUMI-E

01. SUMI-E MINI



02. SUMI-E TEGAMI WET



03. SUMI-E SHEEP HAIR SOFT



04. SUMI-E FUDE



05. SUMI-E FUDE DRY & WET



06. SUMI-E WABI-SABI



07. SUMI-E DRAGON TAIL BRUSH



08. SUMI-E FUDENOSUKE



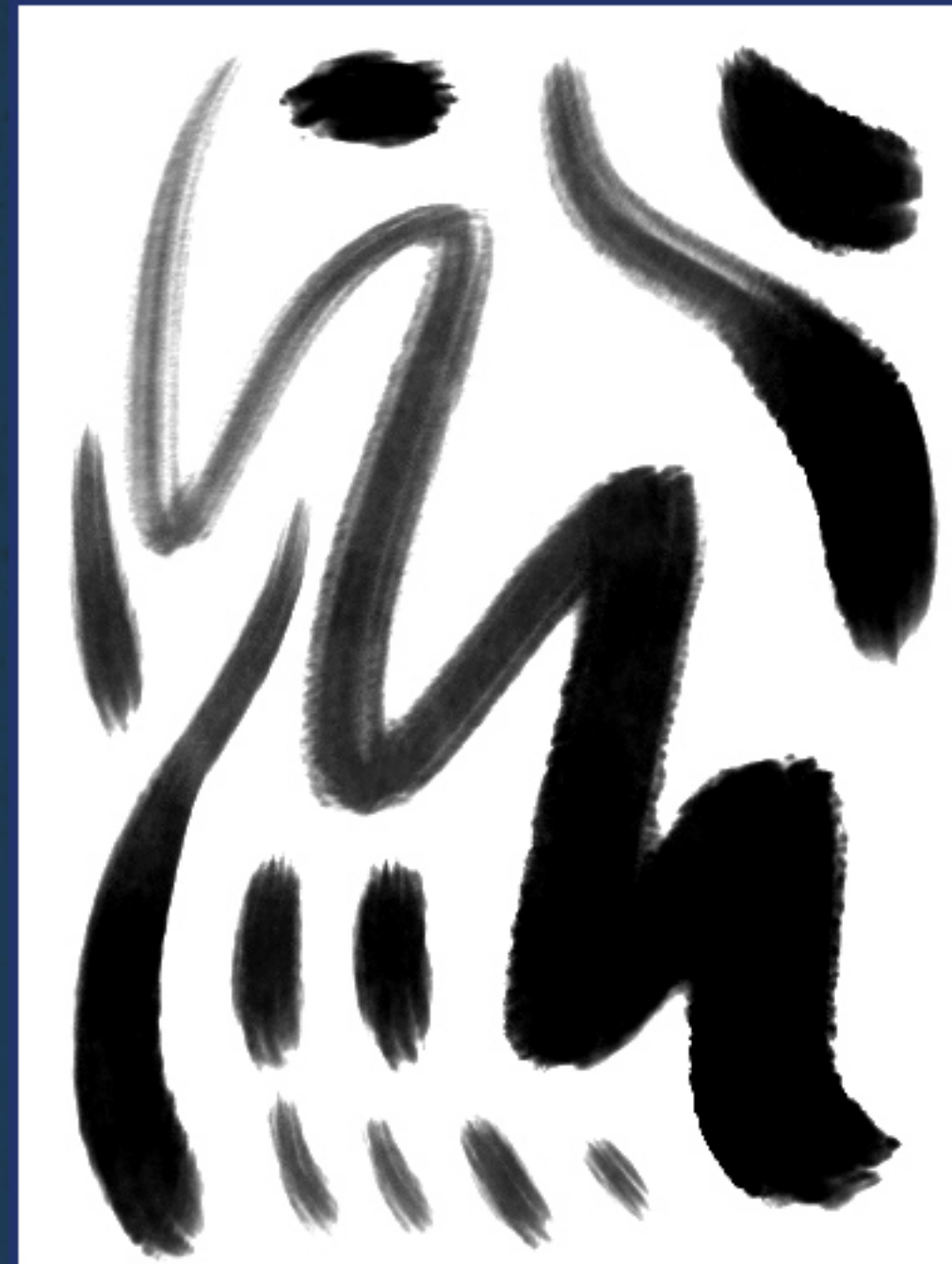
09. SUMI-E WABI-SABI WET



10. SUMI-E SABLE HAIR WET



11. SUMI-E WET



12. SUMI-E BIG WOLF



13. SUMI-E CHINESE WOLF BRUSH



14. SUMI-E EMPEROR WASH



DRY POINT



01. THIN DIRTY



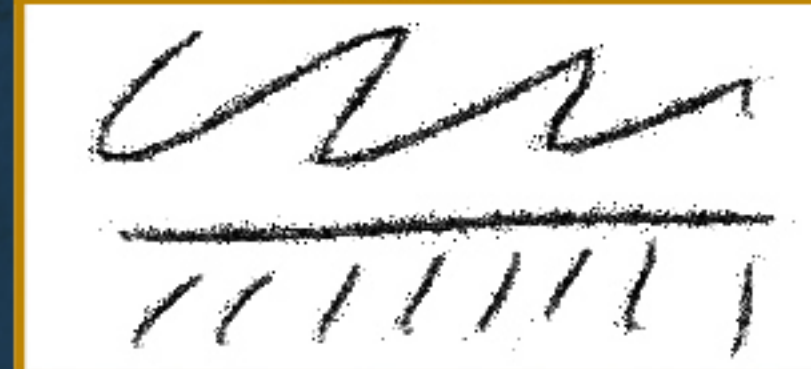
02. DRY POINT FAST



03. DRY POINT



04. BLUEBIRD



05. THE WASP



06. DRY POINT FINE



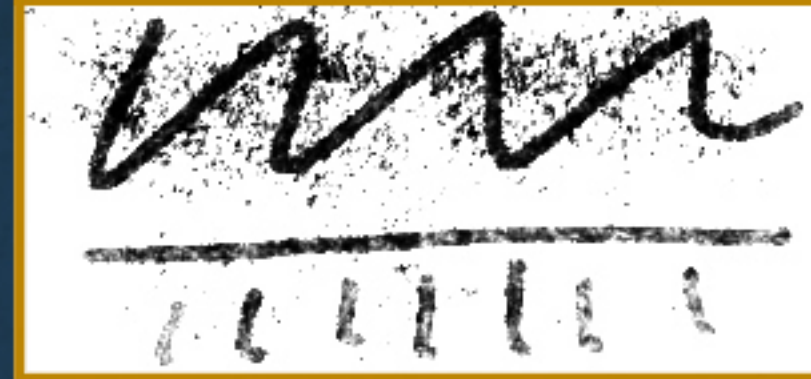
07. DRY POINT #1



08. DRY POINT #2



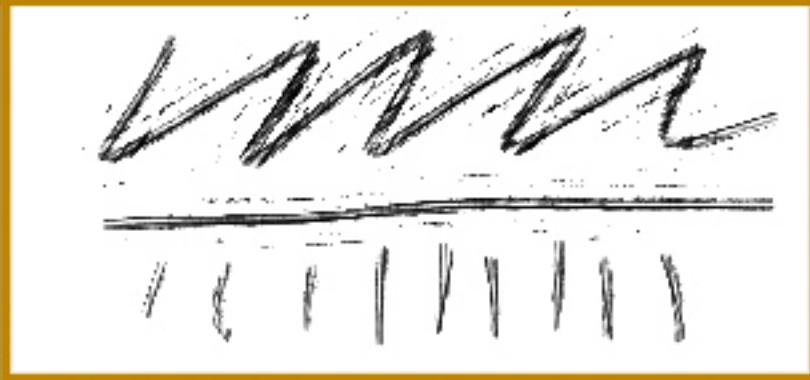
09. DRY POINT #3



10. INK STICK



11. DIRTY DRY POINT



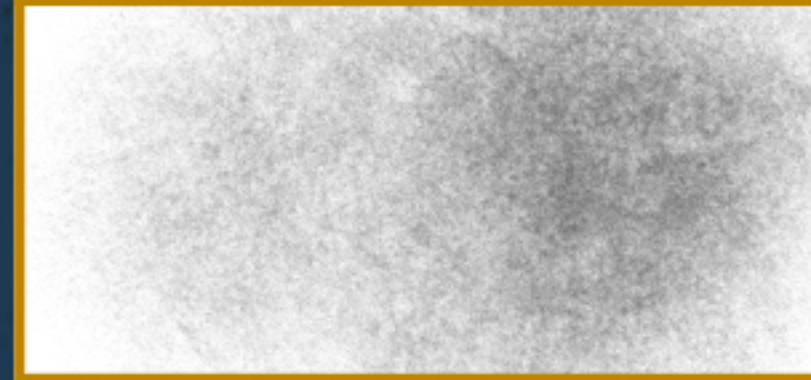
12. DRY POINT HATCH



13. WOOD SCRATCH



14. DRY POINT NOISE



15. DRY POINT SMUDGE



FOUNTAIN PENS

01. AGED FOUNTAIN PEN



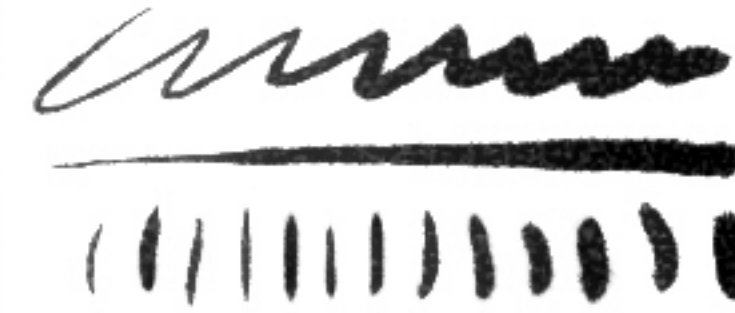
02. WASHED PEN



03. MASTER INKER



04. SHARP NIB



05. HYBRID BRUSH PEN



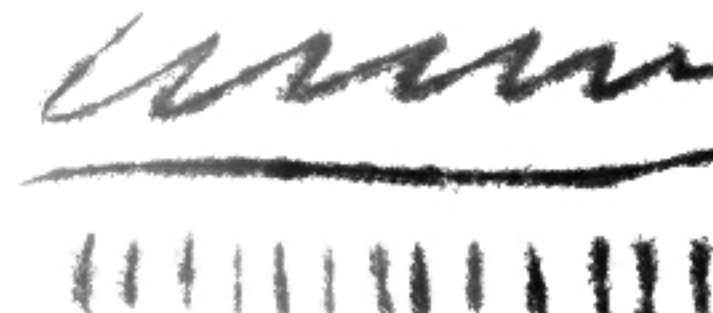
06. WET PAPER & INK



07. REGAL ON GLOSSY PAPER



08. GRANDPA PEN



09. WASHED FOUNTAIN PEN



10. ARTISAN BRUSH PEN 1



11. ULI FOUNTAIN PEN 1



12. ULI FOUNTAIN PEN 2



13. ULI FOUNTAIN PEN 3



14. YOUNG ARTIE



15. MONTEVERDE FLAT



16. BLACK NIB WET



17. BLACK NIB VERY WET



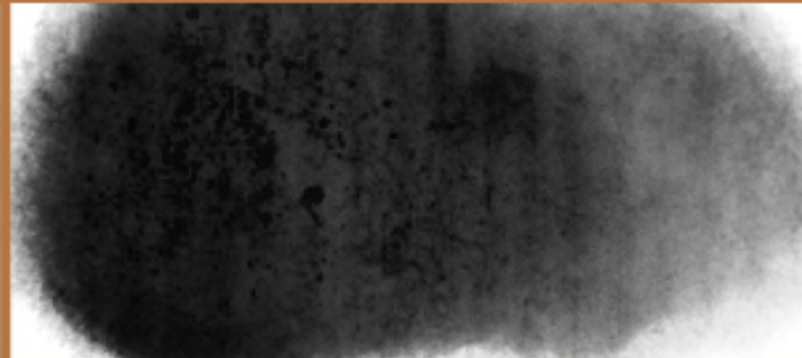
18. ALOHA WASH



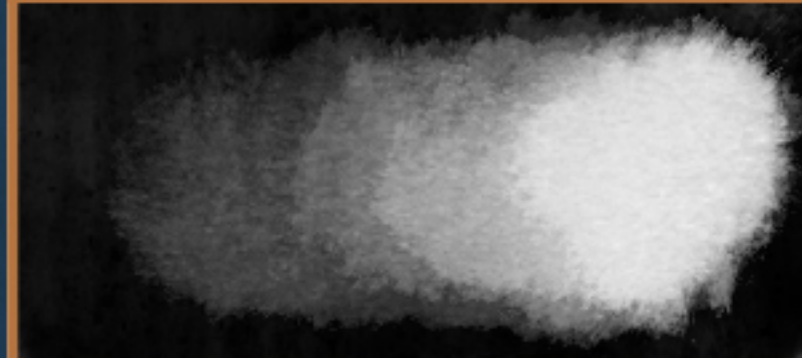
19. WASH TRIP



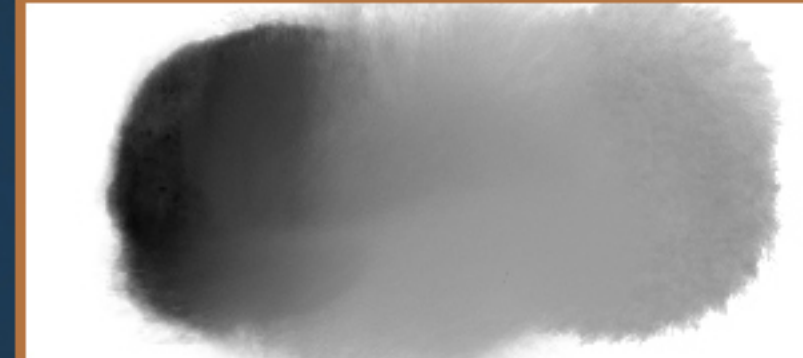
20. GRUNGY WASH



21. WASH ERASER



22. WASH BLENDER



TITLE ERASER

